

# KILOLANI



'IMILOA  
Astronomy Center of Hawai'i

*The Stargazer*



photo by Sam Low

Be sure to check our **Events** and **Planetarium** show schedules on our website at [imiloahawaii.org](http://imiloahawaii.org) to learn what's happening and when.

'Imiloa Astronomy Center is open from 9:00 am to 4:00 pm, Tuesday through Sunday, and on these holidays: Memorial Day, King Kamehameha Day, Independence Day (Fourth of July) and Labor Day. We're closed on Thanksgiving, Christmas and New Year's Day.

Please send your comments and feedback to our Membership and Development Office at [membership@imiloahawaii.org](mailto:membership@imiloahawaii.org) or call (808) 969-9732.

---

### Calendar of Events at a Glance -- details provided below

**2009:** International Year of Astronomy (IYA)

**Every Saturday:** Keiki Kilohoku Korner activities from 9:30 am to 11:00 am  
10:00 am *Secret of the Cardboard Rocket* keiki planetarium show

**January - May 2009:** *Science Rocks!* after-school program, Wednesdays at 2:00 pm

**May 16:** *Maunakea Director's Lecture Series* with Dr. Rolf Kudritzki at 7:00 pm

**May 17:** Galaxy Forum Hawai'i - Hilo at 10:30 am

**May 25:** Memorial Day activities and special programs

**May 28:** "Members, We ❤️ U2!" event at 5:00 pm - RSVP is required and seating is limited!

**May 29:** *U2* - FINAL screening of the popular rock show

**May 30:** Galileo Telescope Workshop at 11:00 am

**June 5:** *Pink Floyd: The Wall* begins! 5 pm: member preview by RSVP; 7:30, 9 pm: general public

**June 20:** *Maunakea Director's Lecture Series* with Director Tom Phillips at 7:00 pm

**June 27-28:** *Camp 'Imiloa* Family Program

**June 29-July 3:** *Camp 'Imiloa* Day Program

**September:** Celebrate Museums Month - visit 10 of our Hawai'i Island museums for free!

**October:** 2nd annual Hilo Wayfinding and Navigation Festival

**October 24:** IYA Block Party in the UH Hilo Science and Technology Park

**December 4:** Member Mahalo Holiday Party!

## Image of the Month

### The Milky Way from Maunakea



[Click here](#) to direct to a page with an explanation of our May Image of the Month!

## Member Announcements

### Membership Benefit Enhancements

#### Mahalo gifts

In 'Imiloa's ongoing efforts to better serve our members, we are now offering new and renewing members "mahalo gifts" at the following levels:

*Individual (\$50)* - 'Imiloa logo pen

*Dual (\$60)* - 'Imiloa lanyard

*Family (\$85)* - 'Imiloa reusable tote

*Patron (\$125)/Silver (\$250)/Gold (\$500)* - choice of 'Imiloa stainless steel mug or umbrella

These mahalo gifts are available for a limited time only, while supplies last.

#### Extra savings on premium membership levels - effective May 15

In addition to existing membership benefits, 'Imiloa is enhancing the Patron, Silver and Gold categories. These premium benefits include:

##### Patron (\$125)

- All the general existing benefits PLUS two extra admission passes (planetarium and exhibit hall) to share with friends
- Additional premium member discount on all 'Imiloa programming (music rock shows, *Maunakea Skies*, educational programming, *3D Hitchhikers Guide to the Universe*). Instead of paying the \$8 standard member rate for evening shows, you only pay \$6 - a 40% savings off the \$10 non-member rate!

##### Silver (\$250)

- All general benefits PLUS two extra admission passes (planetarium and exhibit hall) to share with friends
- FREE admission to all after-hours programming (music rock shows, *Maunakea Skies*, educational programming, *3D Hitchhikers Guide to the Universe*)
- Listing on donor wall in 'Imiloa atrium
- 10% facility rental discount

##### Gold (\$500)

- All general benefits PLUS four extra admission passes (planetarium and exhibit hall) to share with friends
- FREE admission to all after-hours programming (music rock shows, *Maunakea Skies*, educational programming, *3D Hitchhikers Guide to the Universe*)

- Listing on donor wall in 'Imiloa atrium
- 15% facility rental discount

**Unlimited FREE daily planetarium shows for all members**

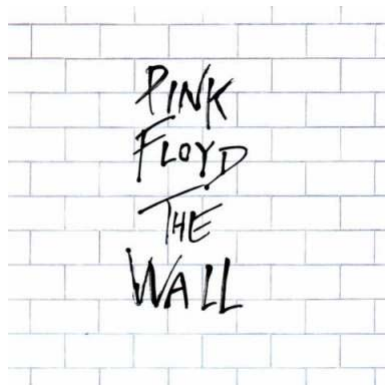
Based on member feedback, we will no longer charge you a "second show" fee for planetarium shows whenever you visit us. What does this mean for you? You can come in and see as many shows as you like (during the regular business hours of 9:00 am - 4:00 pm, Tuesday through Sunday) without being charged to watch an extra show. This means you can spend more time here with your 'ohana and out-of-town visitors.

We are working hard to improve what we offer and how we service our members. Keep sharing your thoughts by emailing us at [membership@imiloahawaii.org](mailto:membership@imiloahawaii.org) or calling us at 969-9732.

**Student and teacher membership discount**

Are you a current or retired schoolteacher or a current university student? Visit our front desk during regular business hours of 9:00 am to 4:00 pm, Tuesday through Sunday to qualify for a \$10.00 discount on all levels of membership with 'Imiloa. Be sure to bring a valid identification showing proof of affiliation.

**Member Preview - Pink Floyd: The Wall**



On Friday, June 5, at 5:00 pm, 'Imiloa Astronomy Center will be offering a special members-only preview for the new planetarium rock show, *Pink Floyd: The Wall*. This rock opera follows in the footsteps of the group's previous albums, adding a more theatrical sound to their already unique style.

The pricing for the preview is as follows:

- Individual, Dual, and Family**....\$8.00
- Patron**.....\$6.00
- Silver and Gold**.....FREE

The general public opening of *Pink Floyd: The Wall* will also be held on June 5 at the usual times of 7:30 pm and 9:00 pm. The price for non-members is \$10.00. Member pricing is the same as the above list.

Keep your eyes open for a special email announcement with the RSVP information and details. We are **not** taking RSVPs

**Member Voices**

**Mahalo for filling out our survey!**

In April, we emailed you a member survey. Mahalo to those of you who completed the survey and shared your mana'o with us. We are closely reviewing all of your feedback and will be responding to those of you who have requested more information on certain programs in the very near future.

We're working to improve our membership program based off the overwhelming positive feedback you've shared and we look forward to bringing you news and developments on this front.

To see a brief sampling of what our members have shared, please [click here](#) to open a PDF link to feedback.

## Upcoming Events and Activities

### International Lunar Observatory Association hosts Galaxy Forum Hawai'i - Hilo

On Sunday, May 17, from 10:30 am to 12:30 pm, the International Lunar Observatory Association will host this year's Galaxy Forum Hawai'i-Hilo event at 'Imiloa Astronomy Center. This exploratory forum is designed to advance the general science education throughout the world. The theme of this year's forum is "Galaxy Education in the 21st Century - Get to know your place in the Universe."

This **free** program is open to Hawai'i's educators and education advocates, science teachers, students, cultural practitioners, amateur and professional astronomers and the general public.



Please RSVP at 885-3474 by Wednesday, May 13. *Please note that this is not an 'Imiloa event so RSVPs must go to the International Lunar Observatory Association at the number listed above.*



The program includes a panel discussion on advancing and enhancing the general science education in Hawai'i, as well as numerous speakers: Ali'i Kimo Pihana and Leilehua Yuen will be presenting "Native Hawai'i Astronomy and Cosmology and 21st Century Galaxy Awareness;" Robert Fox will address all that surrounds the Pacific International Space Center for Exploration Systems (PISCES) and the UH Hilo Astronomy Department; Kumiko Usuda from the Subaru Telescope will discuss how to "Make Your Own Milky Way Models;" the International Lunar Observatory Association (ILOA) will present the "International Lunar Observatory Galaxy

First Light Imaging;" and Gail Loeffler will be the speaking representative from the 'Imiloa Astronomy Center.

### Memorial Day at 'Imiloa

'Imiloa Astronomy Center will be **open** on Memorial Day, Monday, May 25 from 9:00 am to 4:00 pm. Join us for fun crafts, Hawaiian music, and special presentations.

There will be a special program with guests from Mokupapapa, the Discovery Center for Hawai'i's Remote Coral Reefs. This program will inspire participants to become more aware of local marine resources in our area, and the numerous ways in which they can help to manage them - all through a simple limu press activity. The Hawaiian limu press activity will be open for all



participants.

From 10:00 am to 3:00 pm, Auntie Doreen Henderson will be hosting Lei Hulu of Hilo, a **free** feather flower making exhibit and workshop. At the same time, the Auntie CC Uilani Troupe will be performing Hawaiian music in the atrium and there will be lauhala weaving in the Earl and Doris Bakken Moanahoku Hall. Special showings of *400 Years of Astronomy* will be held throughout the day. Exhibits and planetarium fees apply.

For more information, please contact our Marketing Department at 969-9705 or 969-9714.

## Upcoming Events and Activities, cont.

### "Members, We ♥ U2!" Member appreciation event May 28



On Thursday, May 28, from 5:00 pm to 8:00 pm, 'Imiloa Astronomy Center is proud to present an evening of live entertainment, food and refreshments, shopping, and a great planetarium show in celebration of your support.

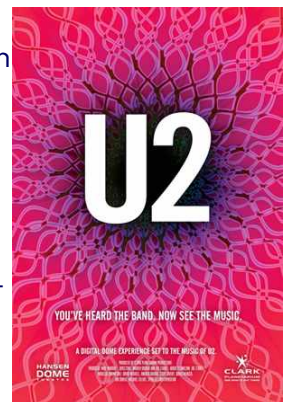
We hope you can join us for this **free** event featuring all kinds of exciting activities. To start the evening off, there will be a private, members-only, live performance by ukelele virtuoso [Brittini Paiva](#) from 5:00 pm to 6:00 pm in the Earl and Doris Bakken Moanahoku Hall accompanied by chili and rice with refreshments. The Bank of Hawaii Museum Store will be open for your private shopping, including [Kealopiko](#) fashions. The exhibit halls will be open for this event from 5 pm to 7:30 pm.

For one night only - we'll be offering **FREE** showings of the [U2 music rock show](#) in our planetarium: one at 6:00 pm and one at 7:00 pm.

We will also be sharing information regarding membership updates and new developments, including deep member discounts, special gifts for renewals and new memberships, and value-added programming.

RSVPs are mandatory and this event is limited to the first 240 RSVPs. RSVP cut-off date is Tuesday, May 26. Please RSVP at [tvandiver@imiloahawaii.org](mailto:tvandiver@imiloahawaii.org) and indicate the following:

1. Name of the event ("Members, We ♥ U2!")
2. Show time (6:00 pm or 7:00 pm)
3. Date (May 28)
4. Your name
5. Total number of people who will attend
6. Type of membership you have





'Imiloa members, you rock! Mahalo for your support and we hope to see you there!

### The Galileoscope Workshop

On Saturday, May 30, starting at 11:00 am, 'Imiloa Astronomy Center and the Subaru Telescope will be coming together to host the first Galileoscope Workshop of the year. As part of the International Year of Astronomy 2009 (IYA2009), the Galileoscope Workshop is aimed at sharing observational and personal experiences with as many people as possible across the world.

This workshop is designed for students in grades 6-8 and is limited to 20 participants. During the workshop, participants will receive their own telescope kit, assemble it themselves, learn about optics, and develop skills in focusing and pointing their personal telescope to view

objects in the sky. They might even have the chance to see what Galileo saw through his telescope 400 years ago - craters on the moon, rings around Saturn, a variety of star clusters, or moons circling Jupiter.



To add to the day's education about Galileo's telescope, a free public presentation about telescopes will take place at 1:00 pm in the Earl and Doris Bakken Moanahoku Hall. The Subaru Telescope will provide a replica of a Galileo-vintage telescope for keiki to experience where they can learn how the two lenses work and also about the ways that telescopes help people to observe the cosmos. For this part of the program, the public is welcome and seating will be on a first-come, first-served basis.

The fee for the workshop is \$15 for members and \$20 for non-members. The fee includes the telescope and a portable tri-pod that each participant can take home. Only one telescope and tripod per family will be provided. To register in advance, participants may sign-up and pre-pay by check or cash only at 'Imiloa.

### Camp `Imiloa - Summer Science Rocks! 2009

Notice to all parents...Camp `Imiloa is being revamped! The camp will highlight activities from our *Science Rocks!* after-school program: focused on science, math, culture, and fun! Students will explore such topics as the geometry of nature, space science and astronomy, chemistry, electronics and art, inventions and more...Students will use the latest in science kits and equipment.

The original dates will remain the same:

- Day Camp (for students only) will be June 29 through July 3
- Weekend Family Camp (for one adult and one child) will be June 27 and 28



The best news is that the price has been reduced for each camp to \$110.00. Members receive an additional 10% discount and pay only \$100.00!

Call 969-9729 immediately for reservations, as space is limited.

### Save a Sunday!

Starting this summer, Auntie Maile Yamanaka will be hosting weekly programs at 'Imiloa specially tailored for the keiki. Every Sunday, at 1:00 pm, Auntie Maile will be teaching the keiki Hawaiian songs about stars, simple chants, give book readings, and more.

Mark your calendars! Details will be posted in next month's *Kilolani*.

## Mahalo, Subaru Telescope!

### Bringing the stars to Big Island keiki

'Imiloa Astronomy Center has received a generous donation of \$9,500 from the Subaru Telescope of the National Astronomical Observatory of Japan. This donation will help to support visits to the 'Imiloa Center by K-12 schoolchildren and their teachers, as part of the ambitious grant from the Gordon and Betty Moore Foundation. The source of this gift was the Japan Foundation for the Promotion of Astronomy.

Dr. Masahiko Hayashi, the Director of the Subaru Telescope has stated: "Subaru strongly supports 'Imiloa's overall mission of celebrating both Hawaiian culture and astronomy on the sacred mountain of Mauna Kea...Student participation in 'Imiloa's educational experiences fosters connections to their Hawaiian heritage as well as to the stars in the night sky."



Subaru's great-hearted donation will be matched with another \$19,000, thus tripling the value of the gift, under the terms of the Moore Foundation's grant: for every \$1 of additional support that 'Imiloa receives, the Moore Foundation is providing \$2. The Moore Foundation is assisting 'Imiloa with our goal of reaching 100% of the island's keiki, by giving them the 'Imiloa experience.



The Subaru Telescope is one of the world's largest optical-infrared telescopes. Located on the summit of Mauna Kea, it is one of the best sites on earth to view outer space from. Subaru's organization collaborates with scientists, educators, and the local community to enhance our understanding of the universe. Please visit [www.SubaruTelescope.org](http://www.SubaruTelescope.org) for more information.

If you would like to help us reach our goal of enabling every student on the Big Island to have an 'Imiloa experience, please visit us at:

<http://www.uhf.hawaii.edu/ImiloaMooreGrantFund>

## Merrie Monarch Week at 'Imiloa

### A big success!

Didn't get a chance to join us for Merrie Monarch week? 'Imiloa Astronomy Center, as an official partner with the Merrie Monarch Festival, hosted a plethora of events and activities, all of which were free and open to the public. From performances by Auntie Darlene Ahuna, to Manu Boyd's halau performances and Miss Aloha Hula's presentation, each day was unique and complimentary to the Festival as a whole.

We hope to see you next year!

Visit these links to see what you missed:

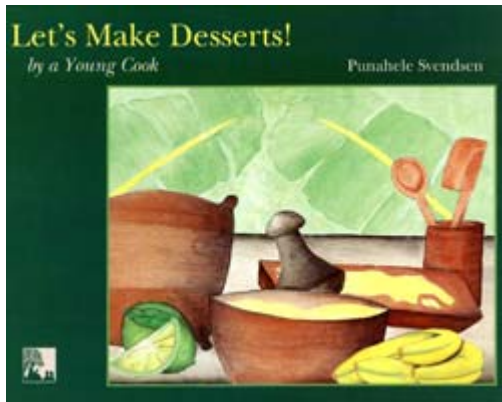
<http://www.bigislandvideonews.com/hilo/2009/20090418boyd.htm>

<http://www.bigislandvideonews.com/hilo/2009/20090417imiloa.htm>



## Bank of Hawaii Museum Store

### Free cookbook promotion!



For the next two months, May and June, the 'Imiloa Bank of Hawaii Museum Store will be running a special promotion. If you purchase \$25 worth of books published by Kamehameha Publishing, you will receive a **FREE** bilingual Hawaiian-English cookbook made by our keiki, entitled Let's Make Desserts!

This is a great opportunity to support our local schools, and our local keiki.

The Bank of Hawaii Museum Store now carries Hawai'i designed apparel from Kealopiko Designs. Kealopiko Designs believes that images from the rich natural and cultural heritage of Hawai'i are the perfect things for adorning the alo (the face), as well as the kua (the back), and that they should be shown proudly to the world. Kealopiko Designs strives to bring to your kino (your body) the choicest Hawaiian-inspired clothing possible.

Ke alopiko, the belly of the fish, was prized by the Hawaiians of old who recognized it as the choicest part of the animal: the place that was momona, fat or sweet. The alo, or the front of the body, is what we present to the world; the piko in the center of our own bellies is the one that connects us to the present, to our living relatives, and to those with whom we share space.



## Keiki Kilohoku Korner

### Activities every Saturday!

The Keiki Kilohoku Korner, or K-Cubed, is on every Saturday from 9:30 am - 11:00 am for the visitors who come to see *Secret of the Cardboard Rocket*, our 10:00 am keiki planetarium show. Educational activities will take place in 'Imiloa's atrium area. Storytelling, science demos and experiments will be offered.

## Science Rocks!

### Only two sessions left!

Our after-school program, "*Science Rocks!*" is in full swing! Students from area schools, in grades 4-6, are enjoying non-stop, high energy, hands-on science activities every Wednesday afternoon while school is in session. Don't miss out on this premier, high quality, science education program that parents are raving about and children don't want to leave. Check out all the information on our [website](#). This is where kids learn how cool science can be, introducing them to the world of science all around them! They won't want to miss it - this academic year's concluding program will be on May 27.



The final sessions include the following:

May 20 - Geometry of Nature

May 27 - Pico Workshop: Time to Tinker

For more information or to access the enrollment form, please [click here](#) or call Gail Loeffler at 969-9729.

## May Maunakea Director's Lecture Series: "Killer Asteroids, Supernovae, and the Dark Side of the Universe"

### Saturday, May 16 at 7:00 pm in the planetarium

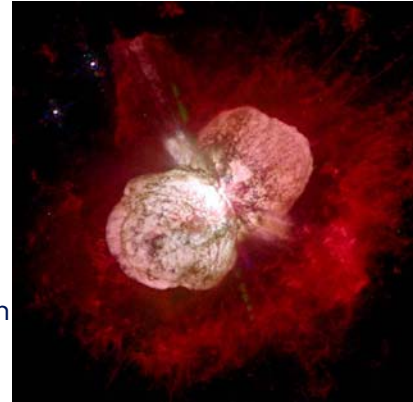
On Saturday, May 16, at 7:00 pm, 'Imiloa Astronomy Center will host this month's popular *Maunakea Director's Lecture Series* program. This month's program will be hosted by Dr. Rolf Kudritzki, Director of the University of Hawai'i's Institute for Astronomy, presenting "Killer Asteroids, Supernovae, and the Dark Side of the Universe."



Dr. Kudritzki's talk will take his audience deep into the universe. As Dr. Kudritzki has stated: "The universe is beautiful and it is mysterious. But it is also dangerous." He will illustrate the physical nature of Killer Asteroids, what their real danger is, and how a new project by the University of Hawai'i's Institute for Astronomy will enable us to detect them many decades before their possible impact. He will also

elaborate on the ways that their orbits can be deflected and impacts can be avoided.

Dr. Kudritzki will illustrate the ways in which the search for killer asteroids can also lead to numerous other astronomical detections, such as supernovae explosions in galaxies billions of light years away. The observations of these events can be used to investigate the physical nature of the enigmatic "Dark matter" and "Dark Energy", which are the cause of formation of the large scale structure of the universe and its accelerated expansion after the Big Bang.



The Sky Garden Restaurant will be open from 5:00 to 8:00 pm for dinner.

For more information about *Maunakea Director's Lecture Series*, please visit the [Events](#), [What's New](#), and [Planetarium](#) pages at [imiloahawaii.org](http://imiloahawaii.org).

*Maunakea Director's Lecture Series* begins at 7:00 pm and is now on the third Saturday of every month. Because this is the International Year of Astronomy, all *Maunakea Director's Lecture Series* programs will be **free** for members and the community at-large throughout 2009. First come, first serve. Please plan to arrive at least 15 minutes in advance.

Questions? Please feel free to call Shawn Laatsch, 'Imiloa's Planetarium Manager at 969-9735.

## In the Planetarium

### **U2 - Hurry before it's gone! - last show May 29th**

'Imiloa's Friday night music entertainment show features one of the greatest bands of the last two decades: U2. The last showing will be on Friday, May 29. Shows are offered every Friday at 7:30 and 9:00 pm.

#### **Pricing (effective May 15):**

Non members.....\$10 Individual, Dual, Family.....\$8  
Patron.....\$6 Gold and Silver.....FREE

To purchase tickets, please call 969-9704 or 969-9703. You can also visit our front desk during regular business hours. Questions about our revised pricing? Contact our Membership and Fund Development Office at 969-9732.

### ***Awesome Light: Discoveries from the Telescopes of Maunakea***

*Awesome Light* is taking 'Imiloa in a new direction as a producer of planetarium shows. Previously known as *Hawai'i's Observatories*, *Awesome Light* is now opening its scope to an international audience. This collaborative production involves three Maunakea observatories, Gemini, Subaru, and Canada-France-Hawai'i, and is a joint effort by local talent and photographers, Sky-Skan, and 'Imiloa Astronomy Center. The show originally began on Saturday, Oct. 25, 2008 and is offered daily, Tuesday through Sunday, at 2:00 pm.

####